

## REPLACEMENT PARTS LIST

Single Package Gas Heating / Electric Cooling

PPG2GF Series & PPG2GF – "A" Series

15 SEER Models



### IMPORTANT

- This document is primarily intended to assist qualified individuals experienced in the proper repair or servicing of this appliance. Only factory authorized parts or accessory kits may be used with this product. Improper installation, service, adjustment, or maintenance may cause explosion, fire, electrical shock or other hazardous conditions which may result in personal injury or property damage.
- Some local codes require licensed installation / service personnel to service this type of equipment. Under no circumstances should the equipment owner attempt to install parts or service this equipment. Failure to comply with this warning could result in property damage, personal injury, or death.

**2 & 3 Ton Single Package Gas Heating / Electric Cooling Units  
(PPG2GF Series & PPG2GF – "A" Series)**

ITEM	DESCRIPTION	2 TON MODELS		3 TON MODELS	
		X24K072X	X24K080XA	X36K100X	X36K100XA
		921232P	921232PA	920905P	920905PA
1	ASSY, CAP, DUCT, HORIZONTAL (NOT SHOWN)	283101BR	283101BR	283101BR	283101BR
2	TOP PAN ASSY. – LEFT	293781BR	293781BR	293781BR	293781BR
3	CORE, CHARGING PORT (NOT SHOWN)	662103	662103	662103	662103
4	PANEL, HEAT EX. DIVIDER	D05072R	D05072R	D05072R	D05072R
5	BOTTOM PAN ASSY	D05480R	D05480R	D05480R	D05480R
6	RAIL, BASE, 47.23" LG	277551	277551	277551	277551
7	RAIL, BASE, 55.63" LG	277552	277552	277552	277552
8	DIVIDER PANEL ASSY	D05504R	D05504R	D05504R	D05504R
9	DUCT CAP ASSY	D05530R	D05530R	D05530R	D05530R
10	BLOWER PANEL ASSY. 34"	D05542BR	D05542BR	D05542BR	D05542BR
	BLOWER PANEL ASSY. 42"	–	–	–	–
11	ASSY, SRV PNL, INSULATED, 34"	296638BR	296638BR	296638BR	296638BR
	ASSY, SRV PNL, INSULATED, 42"	–	–	–	–
12	SUPPLY PANEL ASSY	D05552BR	D05552BR	D05552BR	D05552BR
13	RETURN PANEL ASSY	D05565BR	D05565BR	D05565BR	D05565BR
14	CORNER PANEL ASSY, 34"	D05628BR	D05628BR	D05628BR	D05628BR
	CORNER PANEL ASSY, 42"	–	–	–	–
15	ASSY, CLOSE-OFF PANEL, 34"	D05691R	D05691R	D05691R	D05691R
	ASSY, CLOSE-OFF PANEL, 42"	–	–	–	–
16	PAN, DRAIN	669190	669190	669190	669190
17	POST, CORNER	D09996BR	D09996BR	D09996BR	D09996BR
18	PANEL, FRONT	298892BR	298892BR	298892BR	298892BR
19	BLOWER HSG ASSY, 9/10X10	297214R	297214R	297214R	297214R
	BLOWER HSG ASSY, 11X10	–	–	–	–
20	WHEEL, BLOWER 10 X 10	667207	667207	667207	667207
	WHEEL, BLOWER 11 X 10	–	–	–	–
21	MTR, VS, PROG, R4, 1/2HP, 14/15 SEER	M0018206R	–	M0018212R	–
	MTR, VS, PROG, R6, 1/2HP, 15 SEER, 2 STG	–	M0074345R	–	M0074346R
	MTR, VS, PROG, R4, 1HP, 14/15 SEER	–	–	–	–
	MTR, VS, PROG, R6, 1HP, 15 SEER, 2 STG	–	–	–	–
22	CONTACTOR	624712	624712	624712	624712
23	TRNSFRM, 208/240/24V, 60VA, 60HZ	–	–	–	–
	TRNSFRM, 208/240/24V, 40VA, 60HZ	622336	622336	622336	622336
24	CAPAC, RUN 35/7.5/370–RND–MTL	620762	620762	–	–
	CAPAC, RUN 40/7.5/370–RND–MTL	–	–	620888	620888
	CAPAC, RUN 45/7.5/370–RND–MTL	–	–	–	–
	CAPAC, RUN 80/7.5/370–RND–MTL	–	–	–	–
25	IGNITION CONTROL, 2 STAGE	903106	–	903106	–
	IGNITION / BLOWER CONTROL, 2 STG, 2 SPD	–	921378	–	921378
26	PLUG, MOLDED, L, 2–STAGE, (NOT SHOWN)	634682	634682	634682	634682
27	EXHAUST DUCT ASSY.	263420R	263420R	263420R	263420R
28	TOUCH UP PAINT, GREY (NOT SHOWN)	904038	904038	904038	904038

Please specify Model No., Serial No, and the correct part number(s) when ordering parts from the nearest authorized dealer or service center.

**2 & 3 Ton Single Package Gas Heating / Electric Cooling Units  
(PPG2GF Series & PPG2GF – "A" Series)**

ITEM	DESCRIPTION	2 TON MODELS		3 TON MODELS	
		X24K072X	X24K080XA	X36K100X	X36K100XA
		921232P	921232PA	920905P	920905PA
29	INDUCER MOTOR, SINGLE SPEED, 230V	903162	–	903162	–
	INDUCER MOTOR, 2 SPEED, 230V	–	921379	–	921379
30	SWITCH, PRESSURE, NO, 1.00" W.C.	632422	–	632422	–
	SWITCH, PRESSURE, DUAL, NO., .50"/.70"W.C.	–	632555	–	632555
31	GASKET, COLLECTOR PAN	689506	689506	689506	689506
32	GASKET, INDUCER MOTOR MOUNTING	689518	689518	689518	689518
33	HEAT EXCH. PANEL ASSY, 3 TUBE	M0002530R	–	–	–
	HEAT EXCH. PANEL ASSY, 4 TUBE	–	M0002536R	–	–
	HEAT EXCH. PANEL ASSY, 5 TUBE	–	–	293332R	293332R
34	LIMIT SWITCH, MAIN AIR (170/120)	626423	626423	–	–
	LIMIT SWITCH, MAIN AIR (140/120)	–	–	626446	626446
	LIMIT SWITCH, MAIN AIR (165/145)	–	–	–	–
35	BURNER ASSY, 2 STG VALVE, 3 TUBE	293321	–	–	–
	BURNER ASSY, 2 STG VALVE, 4 TUBE	–	M0034104R	–	–
	BURNER ASSY, 2 STG VALVE, 5 TUBE	–	–	293323	293323
36	BRACKET, EXT. SERV PT, HI-FLOW	298551BR	298551BR	298551BR	298551BR
37	LIMIT SWITCH, FLAME ROLLOUT 320° F	626547	626547	626547	626547
38	SENSOR, FLAME	632396	632396	632396	632396
39	BURNER, INSHOT	660812	660812	660812	660812
40	REPL. HAIL GUARD KIT (NOT SHOWN)	921213	921213	921213	921213
41	ORIFICE, MAIN BURNER, #43 DRILL (NOT SHOWN)	661043	–	–	–
	ORIFICE, MAIN BURNER, #45 DRILL (NOT SHOWN)	–	661045	661045	661045
42	MANIFOLD, GAS, 3 BURNER	664303	–	–	–
	MANIFOLD, GAS, 4 BURNER	–	664304	–	–
	MANIFOLD, GAS, 5 BURNER	–	–	664305	664305
43	DRIER, FILTER, UNIFLOW, 8 IN <sup>3</sup>	669764	669764	669764	669764
44	COVER, VENT	265040R	265240R	265040R	265240R
45	PANEL, WEATHER	263880	263880	263880	263880
46	SUPPORT, COIL	263394	263394	263394	263394
47	PAN, COLLECTOR ASSY, 1.25" ORIFICE	–	D05766	–	–
	PAN, COLLECTOR ASSY, 1.35" ORIFICE	D10329	–	–	–
	PAN, COLLECTOR ASSY, 1.44" ORIFICE	–	–	–	M0074320
	PAN, COLLECTOR ASSY, 1.69" ORIFICE	–	–	–	–
	PAN, COLLECTOR ASSY, 1.75" ORIFICE	–	–	D10323	–
	PAN, COLLECTOR ASSY, 1.88" ORIFICE	–	–	–	–
48	CAPACITOR STRAP	258781	258781	258781	258781
49	COIL, INDOOR	D13001R	D13001R	D13001R	D13001R
50	THERMAL EXPANSION VALVE	664343	664343	664349	664349
51	COMP, COPE, ZPS20K4E–PFV	920334	920334	–	–
	COMP, COPE, ZPS30K4E–PFV	–	–	920335	920335
	COMP, COPE, ZPS40K4E–PFV	–	–	–	–
	COMP, COPE, ZPS51K4E–PFV	–	–	–	–

Please specify Model No., Serial No, and the correct part number(s) when ordering parts from the nearest authorized dealer or service center.

**2 & 3 Ton Single Package Gas Heating / Electric Cooling Units  
(PPG2GF Series & PPG2GF – "A" Series)**

ITEM	DESCRIPTION	2 TON MODELS		3 TON MODELS	
		X24K072X	X24K080XA	X36K100X	X36K100XA
		921232P	921232PA	920905P	920905PA
52	SWITCH, HIGH PRESS.– AUTO RESET (NOT SHOWN)	632401	632401	632401	632401
53	FITTING, PANEL MOUNT, HI FLOW 3/8"	664393	664393	664393	664393
54	CORE, PORT, HI, FLOW, BRASS (NOT SHOWN)	664331	664331	664331	664331
55	VALVE, GAS, 2–STAGE, H.W.	624652	624652	624652	624652
56	GROMMET, COMPRESSOR, SCROLL (NOT SHOWN)	668530	668530	668530	668530
57	COMPRESSOR SOUND BLANKET (NOT SHOWN)	689792	689792	689792	689792
58	COIL, OUTDOOR	2B6591R	2B6591R	287071R	287071R
59	INSULATED TOP RIGHT PAN ASSY.	M0034710R	M0034710R	M0034710R	M0034710R
60	MOTOR, OUTDOOR FAN	622171	622171	621990	621990
61	FAN, BLADE	667351	667351	667351	667351
62	FAN, GRILLE, 24"	669335	669335	669335	669335
63	GUARD, COIL (FORMED) (NOT SHOWN)	2A8453R	2A8453R	2A8453R	2A8453R
64	COMPRESSOR BOLTS (NOT SHOWN)	600400	600400	600400	600400
65	IGNITOR	903179	903179	903179	903179
66	PANEL, BLOWER DISCHARGE	281493	281493	281493	281493
67	BLOWER SHELF	283932	283932	283932	283932
68	DIVIDER PANEL BRACKET	2B1891	2B1891	2B1891	2B1891
69	CHANNEL, DRAIN (N/A WITH 1 PIECE TOP PAN)	279722	279722	279722	279722
71	SWITCH, LOW PRESSURE (NOT SHOWN)	632393	632393	632393	632393
72	ACCESS FITTING	663812	663812	663812	663812
73	FAN ORIFICE	295481BR	295481BR	295481BR	295481BR
74	VARIABLE SPEED BOARD, PCB	624620	N/A	624620	N/A
75	CONTROL BRACKET	298591	298591	298591	298591
76	ONE–PIECE TOP PAN	M0034710BR	M0034710BR	M0034710BR	M0034710BR
77	TERMINAL BOARD, LOW VOLTAGE	632475	632475	632475	632475
78	COMFORT ALERT	624651	624651	624651	624651

Please specify Model No., Serial No, and the correct part number(s) when ordering parts from the nearest authorized dealer or service center.

**4 & 5 Ton Single Package Gas Heating / Electric Cooling Units  
(PPG2GF Series & PPG2GF – "A" Series)**

ITEM	DESCRIPTION	4 TON MODELS		5 TON MODELS	
		X48K120X	X48K120XA	X60K120X	X60K120XA
		920906P	920906PA	920907P	920907PA
1	ASSY, CAP, DUCT, HORIZONTAL (NOT SHOWN)	283101BR	283101BR	283101BR	283101BR
2	TOP PAN ASSY. – LEFT	293781BR	293781BR	293781BR	293781BR
3	CORE, CHARGING PORT (NOT SHOWN)	662103	662103	662103	662103
4	PANEL, HEAT EX. DIVIDER	D05074R	D05074R	D05074R	D05074R
5	BOTTOM PAN ASSY	D05480R	D05480R	D05481R	D05481R
6	RAIL, BASE, 47.23" LG	277551	277551	277551	277551
7	RAIL, BASE, 55.63" LG	277552	277552	277552	277552
8	DIVIDER PANEL ASSY	M0060704R	M0060704R	M0060704R	M0060704R
9	DUCT CAP ASSY	D05530R	D05530R	D05530R	D05530R
10	BLOWER PANEL ASSY, 34"	–	–	–	–
	BLOWER PANEL ASSY, 42"	M0060714BR	M0060714BR	M0060714BR	M0060714BR
11	ASSY, SRV PNL, INSULATED, 34"	–	–	–	–
	ASSY, SRV PNL, INSULATED, 42"	M0060720BR	M0060720BR	M0060720BR	M0060720BR
12	SUPPLY PANEL ASSY	M0060715R	M0060715R	M0060715R	M0060715R
13	RETURN PANEL ASSY	M0060716R	M0060716R	M0060716R	M0060716R
14	CORNER PANEL ASSY, 34"	–	–	–	–
	CORNER PANEL ASSY, 42"	M0060717R	M0060717R	M0060717R	M0060717R
15	ASSY, CLOSE-OFF PANEL, 34"	–	–	–	–
	ASSY, CLOSE-OFF PANEL, 42"	M0060709R	M0060709R	M0060709R	M0060709R
16	PAN, DRAIN	669190	669190	669190	669190
17	POST, CORNER	2B1941BR	2B1941BR	2B1941BR	2B1941BR
18	PANEL, FRONT	298894BR	298894BR	298894BR	298894BR
19	BLOWER HSG ASSY, 9/10X10	–	–	–	–
	BLOWER HSG ASSY, 11X10	297219R	297219R	297219R	297219R
20	WHEEL, BLOWER 10 X 10	–	–	–	–
	WHEEL, BLOWER 11 X 10	667260	667260	667260	667260
21	MTR, VS, PROG, R4, 1/2HP, 14/15 SEER	–	–	–	–
	MTR, VS, PROG, R6, 1/2HP, 15 SEER, 2 STG	–	–	–	–
	MTR, VS, PROG, R4, 1HP, 14/15 SEER	M0018208R	–	M0018208R	–
	MTR, VS, PROG, R6, 1HP, 15 SEER, 2 STG	–	M0074347R	–	M0074347R
22	CONTACTOR	624713	624713	624713	624713
23	TRNSFRM, 208/240/24V, 60VA, 60HZ	–	–	622335	622335
	TRNSFRM, 208/240/24V, 40VA, 60HZ	622336	622336	–	–
24	CAPAC, RUN 35/7.5/370–RND–MTL	–	–	–	–
	CAPAC, RUN 40/7.5/370–RND–MTL	–	–	–	–
	CAPAC, RUN 45/7.5/370–RND–MTL	621153	621153	–	–
	CAPAC, RUN 80/7.5/370–RND–MTL	–	–	621717	621717
25	IGNITION CONTROL, 2 STAGE	903106	–	903106	–
	IGNITION / BLOWER CONTROL, 2 STG, 2 SPD	–	921378	–	921378
26	PLUG, MOLDED, L, 2–STAGE, (NOT SHOWN)	634682	634682	634682	634682
27	EXHAUST DUCT ASSY.	263420R	263420R	263420R	263420R
28	TOUCH UP PAINT, GREY (NOT SHOWN)	904038	904038	904038	904038

Please specify Model No., Serial No, and the correct part number(s) when ordering parts from the nearest authorized dealer or service center.

**4 & 5 Ton Single Package Gas Heating / Electric Cooling Units  
(PPG2GF Series & PPG2GF – "A" Series)**

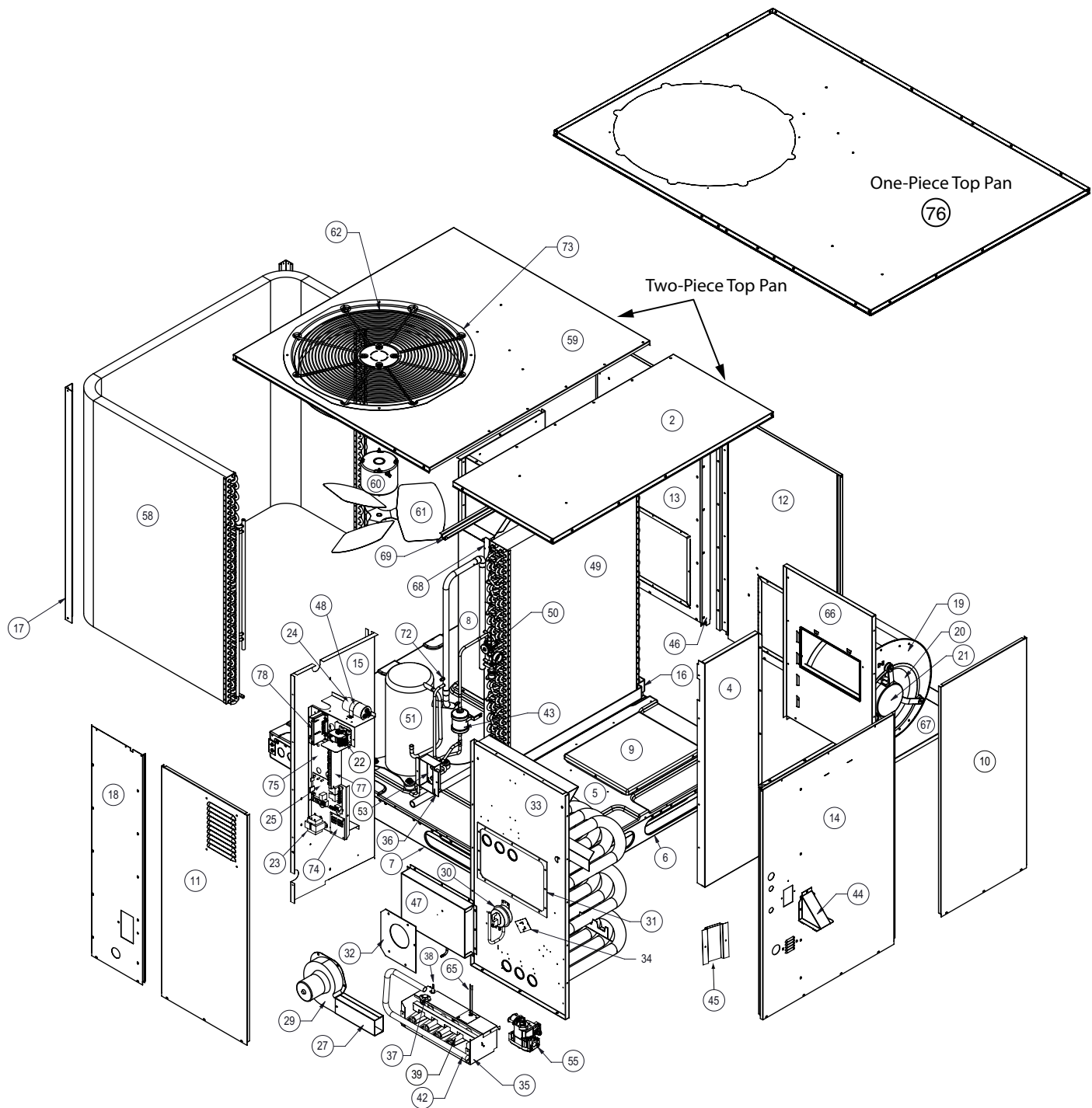
ITEM	DESCRIPTION	4 TON MODELS		5 TON MODELS	
		X48K120X	X48K120XA	X60K120X	X60K120XA
		920906P	920906PA	920907P	920907PA
29	INDUCER MOTOR, SINGLE SPEED, 230V	903162	–	903162	–
	INDUCER MOTOR, 2 SPEED, 230V	–	921379	–	921379
30	SWITCH, PRESSURE, NO, 1.00" W.C.	632422	–	632422	–
	SWITCH, PRESSURE, DUAL, NO., .50"/.70"W.C.	–	632555	–	632555
31	GASKET, COLLECTOR PAN	689506	689506	689506	689506
32	GASKET, INDUCER MOTOR MOUNTING	689518	689518	689518	689518
33	HEAT EXCH. PANEL ASSY, 3 TUBE	–	–	–	–
	HEAT EXCH. PANEL ASSY, 4 TUBE	–	–	–	–
	HEAT EXCH. PANEL ASSY, 5 TUBE	M0042501R	M0042501R	M0042501R	M0042501R
34	LIMIT SWITCH, MAIN AIR (170/120)	–	–	–	–
	LIMIT SWITCH, MAIN AIR (140/120)	–	–	–	–
	LIMIT SWITCH, MAIN AIR (165/145)	626432	626432	626432	626432
35	BURNER ASSY, 2 STG VALVE, 3 TUBE	–	–	–	–
	BURNER ASSY, 2 STG VALVE, 4 TUBE	–	–	–	–
	BURNER ASSY, 2 STG VALVE, 5 TUBE	293322	293322	293322	293322
36	BRACKET, EXT. SERV PT, HI-FLOW	298551BR	298551BR	298551BR	298551BR
37	LIMIT SWITCH, FLAME ROLLOUT 320° F	626547	626547	626547	626547
38	SENSOR, FLAME	632396	632396	632396	632396
39	BURNER, INSHOT	660812	660812	660812	660812
40	REPL. HAIL GUARD KIT (NOT SHOWN)	921213	921213	921213	921213
41	ORIFICE, MAIN BURNER, #43 DRILL (NOT SHOWN)	661043	661043	661043	661043
	ORIFICE, MAIN BURNER, #45 DRILL (NOT SHOWN)	–	–	–	–
42	MANIFOLD, GAS, 3 BURNER	–	–	–	–
	MANIFOLD, GAS, 4 BURNER	–	–	–	–
	MANIFOLD, GAS, 5 BURNER	664305	664305	664305	664305
43	DRIER, FILTER, UNIFLOW, 8 IN^3	669764	669764	669764	669764
44	COVER, VENT	265040R	265240R	265040R	265240R
45	PANEL, WEATHER	263880	263880	263880	263880
46	SUPPORT, COIL	263396	263396	263396	263396
47	PAN, COLLECTOR ASSY, 1.25" ORIFICE	–	–	–	–
	PAN, COLLECTOR ASSY, 1.35" ORIFICE	–	–	–	–
	PAN, COLLECTOR ASSY, 1.44" ORIFICE	–	–	–	–
	PAN, COLLECTOR ASSY, 1.69" ORIFICE	–	M0074321	–	M0074321
	PAN, COLLECTOR ASSY, 1.75" ORIFICE	–	–	–	–
	PAN, COLLECTOR ASSY, 1.88" ORIFICE	D10324	–	D10324	–
48	CAPACITOR STRAP	258780	258780	258780	258780
49	COIL, INDOOR	2B1961R	2B1961R	2B4001R	2B4001R
50	THERMAL EXPANSION VALVE	664350	664350	664350	664350
51	COMP, COPE, ZPS20K4E–PFV	–	–	–	–
	COMP, COPE, ZPS30K4E–PFV	–	–	–	–
	COMP, COPE, ZPS40K4E–PFV	920336	920336	–	–
	COMP, COPE, ZPS51K4E–PFV	–	–	920337	920337
52	SWITCH, HIGH PRESS.– AUTO RESET (NOT SHOWN)	632401	632401	632401	632401

Please specify Model No., Serial No, and the correct part number(s) when ordering parts from the nearest authorized dealer or service center.

**4 & 5 Ton Single Package Gas Heating / Electric Cooling Units  
(PPG2GF Series & PPG2GF – "A" Series)**

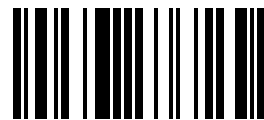
ITEM	DESCRIPTION	4 TON MODELS		5 TON MODELS	
		X48K120X	X48K120XA	X60K120X	X60K120XA
		920906P	920906PA	920907P	920907PA
53	FITTING, PANEL MOUNT, HI FLOW 3/8"	664393	664393	664393	664393
54	CORE, PORT, HI, FLOW, BRASS (NOT SHOWN)	664331	664331	664331	664331
55	VALVE, GAS, 2-STAGE, H.W.	624652	624652	624652	624652
56	GROMMET, COMPRESSOR, SCROLL (NOT SHOWN)	668530	668530	668530	668530
57	COMPRESSOR SOUND BLANKET (NOT SHOWN)	689792	689792	689792	689792
58	COIL, OUTDOOR	2B1971R	2B1971R	2B2001R	2B2001R
59	INSULATED TOP RIGHT PAN ASSY.	M0034710R	M0034710R	M0034716R	M0034716R
60	MOTOR, OUTDOOR FAN	621990	621990	621990	621990
61	FAN, BLADE	667319	667319	667319	667319
62	FAN, GRILLE, 24"	669335	669335	669335	669335
63	GUARD, COIL (FORMED) (NOT SHOWN)	2B4611R	2B4611R	2B4871R	2B4871R
64	COMPRESSOR BOLTS (NOT SHOWN)	600400	600400	600400	600400
65	IGNITOR	903179	903179	903179	903179
66	PANEL, BLOWER DISCHARGE	281495	281495	281495	281495
67	BLOWER SHELF	283932	283932	283932	283932
68	DIVIDER PANEL BRACKET	2B1891	2B1891	2B1891	2B1891
69	CHANNEL, DRAIN (N/A WITH 1 PIECE TOP PAN)	279722	279722	279722	279722
71	SWITCH, LOW PRESSURE (NOT SHOWN)	632393	632393	632393	632393
72	ACCESS FITTING	663812	663812	663812	663812
73	FAN ORIFICE	295481BR	295481BR	295481BR	295481BR
74	VARIABLE SPEED BOARD, PCB	624620	N/A	624620	N/A
75	CONTROL BRACKET	298591	298591	298591	298591
76	ONE-PIECE TOP PAN	M0034710BR	M0034710BR	M0034716BR	M0034716BR
77	TERMINAL BOARD, LOW VOLTAGE	632475	632475	632475	632475
78	COMFORT ALERT	624651	624651	624651	624651

Please specify Model No., Serial No., and the correct part number(s) when ordering parts from the nearest authorized dealer or service center.



**NORDYNE**  
 COMPLETE COMFORT. GENUINE VALUE.

Specifications & illustrations subject to change without notice or incurring obligations.  
 O' Fallon, MO | Printed in U.S.A. (05/11)



709141C (Replaces 709141B)