

REPLACEMENT PARTS LIST

SINGLE PACKAGE GAS HEATING / ELECTRIC COOLING
PPG2GF – "A" SERIES
15 SEER MODELS



IMPORTANT

- This document is primarily intended to assist qualified individuals experienced in the proper repair or servicing of this appliance. Only factory authorized parts or accessory kits may be used with this product. Improper installation, service, adjustment, or maintenance may cause explosion, fire, electrical shock or other hazardous conditions which may result in personal injury or property damage.
- Some local codes require licensed installation / service personnel to service this type of equipment. Under no circumstances should the equipment owner attempt to install parts or service this equipment. Failure to comply with this warning could result in property damage, personal injury, or death.

PPG2GF (A SERIES) SINGLE PACKAGE GAS HEATING / ELECTRIC COOLING UNITS

ITEM	DESCRIPTION	2 TON	3 TON	4 TON	5 TON
		X24K080XA	X36K100XA	X48K120XA	X60K120XA
		921232PA	920905PA	920906PA	920907PA
1	ASSY, CAP, DUCT, HORIZONTAL (NOT SHOWN)	283101BR	283101BR	283101BR	283101BR
2	TOP PAN ASSY. – LEFT	293781BR	293781BR	293781BR	293781BR
3	CORE, CHARGING PORT (NOT SHOWN)	662103	662103	662103	662103
4	PANEL, HEAT EX. DIVIDER	D05072R	D05072R	D05074R	D05074R
5	BOTTOM PAN ASSY	D05480R	D05480R	D05480R	D05481R
6	RAIL, BASE, 47.23" LG	277551R	277551R	277551R	277551R
7	RAIL, BASE, 55.63" LG	277552R	277552R	277552R	277552R
8	DIVIDER PANEL ASSY	D05504R	D05504R	M0060704R	M0060704R
9	DUCT CAP ASSY	D05530R	D05530R	D05530R	D05530R
10	BLOWER PANEL ASSY, 34"	D05542BR	D05542BR	–	–
	BLOWER PANEL ASSY, 42"	–	–	M0060714BR	M0060714BR
11	ASSY, SRV PNL, INSULATED, 34"	296638BR	296638BR	–	–
	ASSY, SRV PNL, INSULATED, 42"	–	–	M0060720BR	M0060720BR
12	SUPPLY PANEL ASSY	D05552BR	D05552BR	M0060715R	M0060715R
13	RETURN PANEL ASSY	D05565BR	D05565BR	M0060716R	M0060716R
14	CORNER PANEL ASSY, 34"	D05628BR	D05628BR	–	–
	CORNER PANEL ASSY, 42"	–	–	M0060717R	M0060717R
15	ASSY, CLOSE-OFF PANEL, 34"	D05691R	D05691R	–	–
	ASSY, CLOSE-OFF PANEL, 42"	–	–	M0060709R	M0060709R
16	PAN, DRAIN	669190	669190	669190	669190
17	POST, CORNER	D09996BR	D09996BR	2B1941BR	2B1941BR
18	PANEL, FRONT	298892BR	298892BR	298894BR	298894BR
19	BLOWER HSG ASSY, 9/10X10	297214R	297214R	–	–
	BLOWER HSG ASSY, 11X10	–	–	297219R	297219R
20	WHEEL, BLOWER 10 X 10	667207	667207	–	–
	WHEEL, BLOWER 11 X 10	–	–	667260	667260
21	MTR, VS, PROG, R6, 1/2HP, 15 SEER, 2 STG, 5.0 (SEE NOTE)	M0092712R	M0092715R	–	–
	MTR, VS, PROG, R6, 1/2HP, 15 SEER, 2 STG	M0074345R	M0074346R	–	–
	MTR, VS, PROG, R6, 1HP, 15 SEER, 2 STG, 5.0 (SEE NOTE)	–	–	M0092718R	M0092721R
	MTR, VS, PROG, R6, 1HP, 15 SEER, 2 STG, 5.0	–	–	M0074347R	M0074347R
22	CONTACTOR	624712	624712	624713	624713
23	TRNSFRM, 208/240/24V, 60VA, 60HZ	–	–	–	622335
	TRNSFRM, 208/240/24V, 40VA, 60HZ	622336	622336	622336	–
24	CAPAC, RUN 35/5/370	01-0083	–	–	–
	CAPAC, RUN 40/7.5/370	–	01-0269	–	–
	CAPAC, RUN 30/7.5/370 (SEE NOTE)	–	–	01-0263	–
	CAPAC, RUN 45/7.5/370	–	–	01-0271	–
	CAPAC, RUN 40/7.5/440 (SEE NOTE)	–	–	–	01-0292
	CAPAC, RUN 80/7.5/370	–	–	–	01-0279
25	IGNITION / BLOWER CONTROL, 2 STG, 2 SPD	921378	921378	921378	921378
26	PLUG, MOLDED, L, 2-STAGE, (NOT SHOWN)	634682	634682	634682	634682
27	EXHAUST DUCT ASSY.	263420R	263420R	263420R	263420R
28	TOUCH UP PAINT, GREY (NOT SHOWN)	904038	904038	904038	904038
29	INDUCER MOTOR, 2 SPEED, 230V	921379	921379	921379	921379
30	SWITCH, PRESSURE, DUAL, NO., .50"/.70"W.C.	632555	632555	632555	632555
31	GASKET, COLLECTOR PAN	689506	689506	689506	689506
32	GASKET, INDUCER MOTOR MOUNTING	689518	689518	689518	689518
33	HEAT EXCH. PANEL ASSY, 4 TUBE	M0002536R	–	–	–
	HEAT EXCH. PANEL ASSY, 5 TUBE	–	293332R	M0042501R	M0042501R
34	LIMIT SWITCH, MAIN AIR (170/120)	626423	–	–	–
	LIMIT SWITCH, MAIN AIR (140/120)	–	626446	–	–
	LIMIT SWITCH, MAIN AIR (165/145)	–	–	626432	626432
35	BURNER ASSY, 2 STG VALVE, 4 TUBE	M0034105R	–	–	–
	BURNER ASSY, 2 STG VALVE, 5 TUBE	–	293323	293322	293322

Please specify the correct Model No., Serial No, and part number(s) when ordering parts from the nearest authorized dealer or service center.
NOTE: Part numbers listed in *italics* apply to units manufactured ON OR AFTER 04/08/2013.

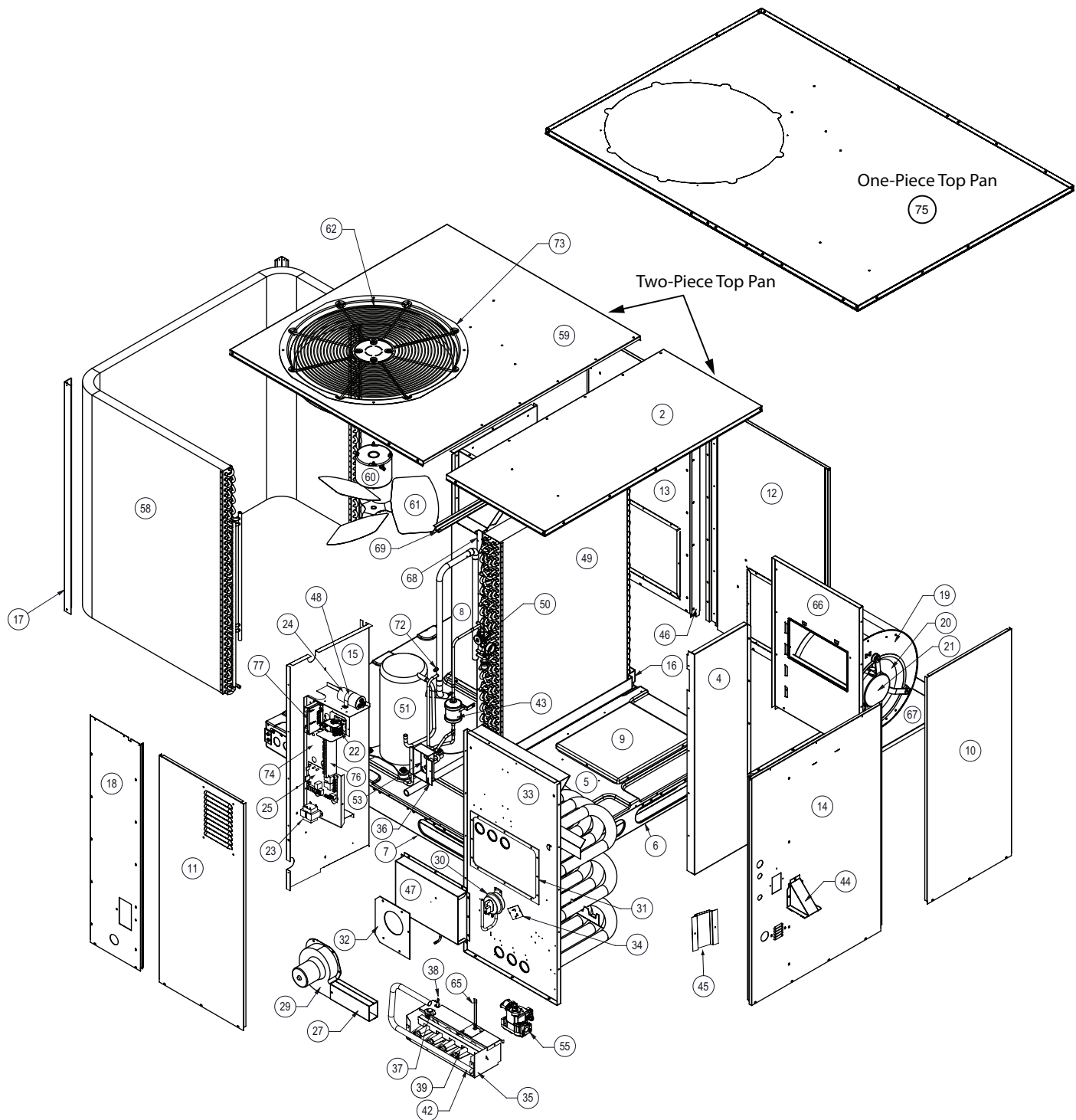
PPG2GF (A SERIES) SINGLE PACKAGE GAS HEATING / ELECTRIC COOLING UNITS

ITEM	DESCRIPTION	2 TON	3 TON	4 TON	5 TON
		X24K080XA	X36K100XA	X48K120XA	X60K120XA
		921232PA	920905PA	920906PA	920907PA
36	BRACKET, EXT. SERV PT, HI-FLOW	298552BR	298552BR	298552BR	298552BR
37	LIMIT SWITCH, FLAME ROLLOUT 320° F	626547	626547	626547	626547
38	SENSOR, FLAME	632396	632396	632396	632396
39	BURNER, INSHOT	660812	660812	660812	660812
40	REPL. HAIL GUARD KIT (NOT SHOWN)	921213	921213	921213	921213
41	ORIFICE, MAIN BURNER, #43 DRILL (NOT SHOWN)	-	-	661043	661043
	ORIFICE, MAIN BURNER, #45 DRILL (NOT SHOWN)	661045	661045	-	-
42	MANIFOLD, GAS, 4 BURNER	664304	-	-	-
	MANIFOLD, GAS, 5 BURNER	-	664305	664305	664305
43	DRIER, FILTER, UNIFLOW, 8 IN ³	669764	669764	669764	669764
44	COVER, VENT	265240R	265240R	265240R	265240R
45	PANEL, WEATHER	263880	263880	263880	263880
46	SUPPORT, COIL	263394	263394	263396	263396
47	PAN. COLLECTOR ASSY, 1.35" ORIFICE	D10329R	-	-	-
	PAN. COLLECTOR ASSY, 1.44" ORIFICE	-	M0074320R	-	-
	PAN. COLLECTOR ASSY, 1.69" ORIFICE	-	-	M0074321R	M0074321R
48	CAPACITOR STRAP	258781	258781	258780	258780
49	COIL, INDOOR	D13001R	D13001R	2B1961R	2B4001R
50	THERMAL EXPANSION VALVE	664343	664349	664350	664350
51	COMP,COPE,ZPS20K5E-PFV-230 SEE NOTE	<i>921844</i>	-	-	-
	COMP,COPE,ZPS20K4E-PFV-230	920334	-	-	-
	COMP,COPE,ZPS30K5E-PFV-230 SEE NOTE	-	<i>921769</i>	-	-
	COMP,COPE,ZPS30K4E-PFV-230	-	920335	-	-
	COMP,COPE,ZPS40K5E-PFV-230 SEE NOTE	-	-	<i>921659</i>	-
	COMP,COPE,ZPS40K4E-PFV-230	-	-	920336	-
	COMP,COPE,ZPS49K5E-PFV-230 SEE NOTE	-	-	-	<i>921793</i>
COMP,COPE,ZPS49K4E-PFV-230	-	-	-	920337	
52	SWITCH, HIGH PRESS.- AUTO RESET (NOT SHOWN)	632401	632401	632401	632401
53	FITTING, PANEL MOUNT, HI FLOW 3/8"	664696	664696	664696	664696
54	CORE, PORT, HI, FLOW, BRASS (NOT SHOWN)	664331	664331	664331	664331
55	GAS VALVE, 2-STAGE, NAT. GAS ONLY*	921816	921816	921816	921816
	GAS VALVE, 2-STAGE, W/ LP REGULATOR SPRINGS*	921691	921691	921691	921691
56	GROMMET, COMPRESSOR, SCROLL (NOT SHOWN)	668530	668530	668530	668530
57	COMPRESSOR SOUND BLANKET (NOT SHOWN)	689792	689792	689792	689792
58	COIL, OUTDOOR	2B6591R	2B6591R	2B1971R	2B2001R
59	INSULATED TOP RIGHT PAN ASSY.	M0034710R	M0034710R	M0034710R	M0034716R
60	MOTOR, OUTDOOR FAN	622171	621990	621990	621990
61	FAN, BLADE	667351	667351	667319	667319
62	FAN, GRILLE, 24"	669335	669335	669335	669335
63	GUARD, COIL (FORMED) (NOT SHOWN)	2A8453R	2A8453R	2B4611R	2B4871R
64	COMPRESSOR BOLTS (NOT SHOWN)	600400	600400	600400	600400
65	IGNITOR	903179	903179	903179	903179
66	PANEL, BLOWER DISCHARGE	281493	281493	281495	281495
67	BLOWER SHELF	283932R	283932R	283932R	283932R
68	DIVIDER PANEL BRACKET	2B8241	2B8241	2B8241	2B8241
69	CHANNEL, DRAIN (N/A WITH 1 PIECE TOP PAN)	279722	279722	279722	279722
71	SWITCH, LOW PRESSURE (NOT SHOWN)	632393	632393	632393	632393
72	ACCESS FITTING	663812	663812	663812	663812
73	FAN ORIFICE	295481BR	295481BR	295481BR	295481BR
74	CONTROL BRACKET	298591	298591	298591	298591
75	ONE-PIECE TOP PAN	M0034710BR	M0034710BR	M0034710BR	M0034716BR
76	TERMINAL BOARD, LOW VOLTAGE	632475	632475	632475	632475
77	COMFORT ALERT (SEE NOTE)	<i>624808</i>	<i>624808</i>	<i>624808</i>	<i>624808</i>
	COMFORT ALERT	624651	624651	624651	624651
78	PLUG, MOLDED HV (NOT SHOWN)	634715	634715	634715	634715

Please specify the correct Model No., Serial No, and part number(s) when ordering parts from the nearest authorized dealer or service center.

*Gas valve kit includes necessary wiring harness for field replacement of gas valve P/N 624652 where applicable.

NOTE: Part numbers listed in *italics* apply to units manufactured ON OR AFTER 04/08/2013.



NORDYNE
 COMPLETE COMFORT. GENUINE VALUE.

Specifications & illustrations subject to change
 without notice or incurring obligations (03/14).



709141F (Replaces 709141E)